

Technical Memorandum

To: Mr. Mark Lipan
From: Sheila D. Rayman, P.E.
Date: 11/19/2021
Re: 2022 Englewood Drive Improvement Project Addendum 3

- The plans will be amended to **REMOVE** the concrete walk and curb ramps from the **EAST SIDE** of Englewood Drive. The typical section will be maintained as to grade and the seeding and mulching will extend to the right-of-way.

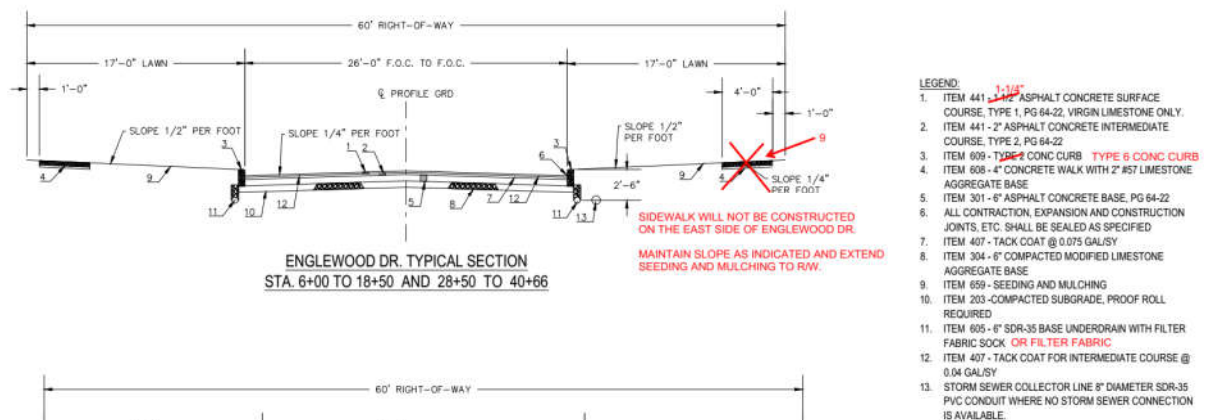
Please consider the following quantities for bidding as shown on the attached updated Proposal Form:

32	608	Concrete Walk, 4" Thick w/ 2" #57 Limestone Agg. Base	10,290	SF
33	608	Concrete Walk, 6" Thick w/ 2" #57 Limestone Agg. Base	2,140	SF
40	659	Seeding and Mulching	12,709	SY
35	609	Curb Ramps	371	SF

This addendum clarifies the following:

- Flexible pipe deflection testing may be preformed by mandrel or crawler mounted camera with crack measuring capabilities as described in ODOT Item 611. All measurements and tolerances shall meet ODOT Item 611 for flexible pipe.
- Proposal Item No. 50, 605 6" Underdrain:
 Refer to Typical Section, Plan Sheet 18, for detail on 6" underdrain.
 The contractor may wrap underdrain with filter fabric, as indicated in the Proposal Form, or filter sock called out in the Typical Section, Plan Sheet 18. The legend on Plan Sheet 18, No, 11 will read: ITEM 605 - 6" SDR-35 BASE UNDERDRAIN WITH FILTER FABRIC OR FILTER FABRIC SOCK.
- Cross sections will not be provided at this time. Please bid the quantity indicated in Proposal Item 23, Excavation and Embankment.
- Proposal Bid Item 29, Asphalt Concrete, Surface Course, Type 1, Medium, PG 64-22, 1-1/4" Thick: Depth of 1-1/4" is correct. The legend on Plan Sheet 18, No, 1 will be revised to indicate 1-1/4" rather than 1-1/2" as indicated on the Bid Set.
- Please **remove Proposal Bid Item No. 36**. There will be no pavement markings for this project. Refer to the attached updated Proposal Form.

7. Proposal Item 60, Item 611 Catch Basin should indicate CB-3 and not CB-3A. This has been revised on the attached updated Proposal Form.
8. The proposed concrete curb is ODOT Type 6, indicated as 6" x 18" on the Proposal Form, Bid Item 34.
9. There is no historic soil data available for areas located within the project limits.
10. For the purposes of bidding, please include section 611.04 as required within Item 611.
11. The following red-marked typical section is being provided for clarification of modifications identified in the addenda issued.



- LEGEND:**
1. ITEM 441 - ~~1-1/2"~~ ^{1-1/4"} ASPHALT CONCRETE SURFACE COURSE, TYPE 1, PG 64-22, VIRGIN LIMESTONE ONLY.
 2. ITEM 441 - 2" ASPHALT CONCRETE INTERMEDIATE COURSE, TYPE 2, PG 64-22
 3. ITEM 609 - ~~TYPE 6~~ ^{TYPE 6} CONC CURB
 4. ITEM 608 - 4" CONCRETE WALK WITH 2" #57 LIMESTONE AGGREGATE BASE
 5. ITEM 301 - 6" ASPHALT CONCRETE BASE, PG 64-22
 6. ALL CONTRACTION, EXPANSION AND CONSTRUCTION JOINTS, ETC. SHALL BE SEALED AS SPECIFIED
 7. ITEM 407 - TACK COAT @ 0.075 GAL/SY
 8. ITEM 304 - 6" COMPACTED MODIFIED LIMESTONE AGGREGATE BASE
 9. ITEM 659 - SEEDING AND MULCHING
 10. ITEM 203 - COMPACTED SUBGRADE, PROOF ROLL REQUIRED
 11. ITEM 605 - 6" SDR-35 BASE UNDERDRAIN WITH FILTER FABRIC SOCK ~~OR FILTER FABRIC~~
 12. ITEM 407 - TACK COAT FOR INTERMEDIATE COURSE @ 0.04 GAL/SY
 13. STORM SEWER COLLECTOR LINE 8" DIAMETER SDR-35 PVC CONDUIT WHERE NO STORM SEWER CONNECTION IS AVAILABLE.

End of memorandum

REVISED 11/19/2021

APPENDIX B

PROPOSAL FORM

BID ITEM	SPEC ODOT	DESCRIPTION	ESTIM. QUANT.	UNIT	TOTAL UNIT PRICE	TOTAL BID FOR ITEM
1	SPEC	Pre-Construction Video	1	LS		
2	SPEC	Post-Construction Video	1	LS		
3	623	Construction Survey and Stakeout	1	LS		
4	624	Mobilization and Demobilization	1	LS		
5	614	Maintaining Traffic	1	LS		
6	201	Clearing and Grubbing, As Per Plan (incl. shrubs and misc. landscape)	1	LS		
7	201	Trees Removed	10	EA		
8	202	Storm Sewer Pipe Removed & Disposed (8" and less)	120	LF		
9	202	Storm Sewer Pipe Removed & Disposed (10" and 12")	2,460	LF		
10	202	Storm Sewer Pipe Removed & Disposed (15" and 24")	2,691	LF		
11	202	Remove and Replace Misc. (Signage, Yard Lights, Etc.) As Per Plan	1	LS		
12	202	Catch Basin Removal and Disposal	48	EA		
13	202	Brick Headwall Removal and Disposal	1	EA		
14	202	Full-Depth Pavement Saw Cutting	594	LF		
15	202	Full-Depth Pavement Removal	10,640	SY		
16	202	4" Concrete Sidewalk Removal	1,045	SF		
17	202	Concrete Curb & Drive Remove and Replace Per City of Stow Standard	350	SF		
18	202	Drive Approach Removal (Asphalt and Concrete)	27,199	SF		
19	638	6" CIP Waterline Removed (As needed due to conflict)	1	LS		
20	638	6" Valve Removed	7	EA		
21	638	Fire Hydrant & Valve Removed	4	EA		
22	638	6" x 6" Tee Removed	3	EA		
23	203	Excavation and Embankment	8,343	CY		
24	204	Subgrade Compaction, Proof Roll Req'd	10,950	SY		
25	254 APP	Pavement Planing	1,000	SY		
26	301	Asphalt Concrete Base, PG 64-22, 6" Thick	1,761	CY		
27	304	Aggregate Base, 6" Thick, Limestone Only	1,825	CY		
28	407	Tack Coat @ 0.075 Gal/SY	868	GAL		
29	441	Asphalt Concrete, Surface Course, Type 1, Medium, PG 64-22, 1-1/4" Thick	401	CY		
30	441	Asphalt Concrete, Intermediate Course, Type 2 (448)	643	CY		
31	608	Concrete Driveway Reconstruction, 6" Thick	17,419	SF		

BID ITEM	SPEC ODOT	DESCRIPTION	ESTIM. QUANT.	UNIT	TOTAL UNIT PRICE	TOTAL BID FOR ITEM
32	608	Concrete Walk, 4" Thick w/ 2" #57 Limestone Agg. Base	10,290	SF		
33	608	Concrete Walk, 6" Thick w/ 2" #57 Limestone Agg. Base	2,140	SF		
34	609	6"x18" Concrete Curb	7,976	LF		
35	609	Curb Ramps	371	SF		
36	642	Pavement Markings Misc.	0	LS		
37	SPEC	Ex. Manhole Adjust to Grade	10	EA		
38	APP	Monument Box	4	EA		
39	APP	Asphalt Pavement Restoration per City of Stow Standard Detail SDR-1	1	LS		
40	659	Seeding and Mulching	12,709	SY		
41	638	6" Dia AWWA C-909 (DR18) Water Main	3,500	LF		
42	638	6" x 6" Tee	2	EA		
43	638	6" Bend 45 Degree	5	EA		
44	638	6" Gate Valve and Box Assembly	6	EA		
45	638	6" Tapping Sleeve & Valve	1	EA		
46	638 APP	3/4" K Copper Service Complete	90	EA		
47	638 APP	Fire Hydrant Complete	4	EA		
48	601	ODOT Type C, Rock Channel Protection, with Type B Filter Fabric	2	CY		
49	602	Headwall - ODOT HW1.1	1	EA		
50	605	6" Shallow Base Underdrain w/ Filter Fabric, SDR-35	7,500	LF		
51	611	6" Conduit, Type C, SDR-35, House Lateral Connections	2,700	LF		
52	611	8" Conduit, Type C, SDR-35, Collector Lines	2,365	LF		
53	611	Clean Out for 8" Collector Lines	16	EA		
54	611	12" Conduit, Type B, 707.65	984	LF		
55	611	15" Conduit, Type B, 707.65	495	LF		
56	611	18" Conduit, Type B 707.65	843	LF		
57	611	24" Conduit, Type B 707.65	1,472	LF		
58	611	48" Storm Sewer Manhole, ODOT No. 3, Flat Top	1	EA		
59	APP	Standing Curb Inlet w/ Grate	33	EA		
60	611	Catch Basin, ODOT CB-3	3	EA		
61	SPEC	Bioretention Cells Complete (3 Cells on West Side of Road, 1,800 SF)	1	LS		
62	605	6" Pipe Underdrain SDR-35	300	LF		
63	SPEC	Stormwater Drainage Water Retention Structure (@ Oakhill Rd.)	1	LS		
64		Street Shade Trees - Per Village of Silver Lake	12	EA		
65		Native Plantings and Landscape - Per Village of Silver Lake	1	LS		

BID ITEM	SPEC ODOT	DESCRIPTION	ESTIM. QUANT.	UNIT	TOTAL UNIT PRICE	TOTAL BID FOR ITEM
66	601	ODOT 703.20 Washed Gravel w/Type B Filter Fabric	23	CY		
67	602	Half-Height Headwall - ODOT HW-2.1	1	EA		
68	611	12" Conduit, Type C, SDR-35	486	LF		
69	611	Catch Basin, ODOT CB-2-2A	6	EA		
70	601	ODOT Type C, Rock Channel Protection, with Type B Filter Fabric (at Bioretention Cells)	20	CY		
71	APP	Sediment & Erosion Control Misc.	1	LS		

The Bidder acknowledges that (1) each Bid Unit Price includes an amount considered by the Bidder to be adequate to cover the Contractor's overhead and profit for each separately identified item, and (2) estimated quantities are not guaranteed and are solely for the purpose of comparison of Bids, and final payment for all unit price Bid items will be based on actual quantities, determined as provided in the Contract Documents.

Total of Lump Sum and Unit Price Bids = Total Bid Price

(NUMBERS) \$ _____

Total of Lump Sum and Unit Price Bids = Total Bid Price

(WORDS) _____